

Presentation of the work of the
INSPIRE Thematic Working Group (TWG)
on Geographical Names

Andreas Illert



INSPIRE: Objectives

- setting the legal framework for the establishment of the **Infrastructure for Spatial Information in the European Community**
- for the purposes of **Community environmental policies** and activities which may have an impact on the environment



INSPIRE: Themes

Themes, Annex I

Coordinate reference systems
Geographical grid systems
Geographical names
Administrative units
Addresses
Cadastral parcels
Transport networks
Hydrography
Protected sites

Themes, Annex II

Elevation
Land cover
Orthoimagery
Geology

Themes, Annex III


Statistical units
Buildings
Soil
Land use
Human health and safety
Utility and Government services
Environmental monitoring facilities
Production and industrial facilities
Agricultural and aquaculture facilities
Population distribution – demography
Area mgmt./restriction/regulation zones & reporting units
Natural risk zones
Atmospheric conditions
Meteorological geographical features
Oceanographic geographical features
Sea regions
Bio-geographical regions
Habitats and biotopes
Species distribution
Energy resources
Mineral resources

INSPIRE: Legal Framework

- European **Directive**: adopted May 15 2007
- **National Legislation**: Member States have two years from the date of adoption to transpose the Directive into national law
- Common **Implementing Rules (IR)** to ensure that the spatial data infrastructures of the Member States are compatible and usable in a Community and transboundary context

INSPIRE: Drafting Teams

Implementing Rules will be elaborated by **Drafting Teams (DTs)**, for each of the main components of INSPIRE:

- metadata,
- data specifications,  for data specifications, the technical documents for each spatial data theme will be prepared by especially convened **Thematic Working Groups (TWGs)**
- network services,
- data and service sharing,
- monitoring procedures

TWG Geographical Names

| | |
|------------------------------|---------|
| Kathleen van Doren | Belgium |
| Andreas Illert (facilitator) | Germany |
| Kent-Jacob Jonsrud | Norway |
| Teemu Leskinen | Finland |
| Sébastien Mustière (editor) | France |
| Miquel Parella | Spain |
| Paloma Abad Power | Spain |
| Pier-Giorgio Zaccheddu | Germany |

INSPIRE objective: Interoperability

- “**interoperability**” is understood as *providing access to spatial data sets as specified in Article 4 of the Directive through network services in a representation that allows for combining them with other such spatial data sets in a coherent way.*
- What is important is that each Member State is able to
 - **transform** existing data sets to the **harmonised data specifications** and
 - **publish** the transformed data **via network services.**

application
schema in
UML

GML

WFS, (WMS)

Requirements to INSPIRE data specifications

Directive, Articles 7(4) and 8(2):

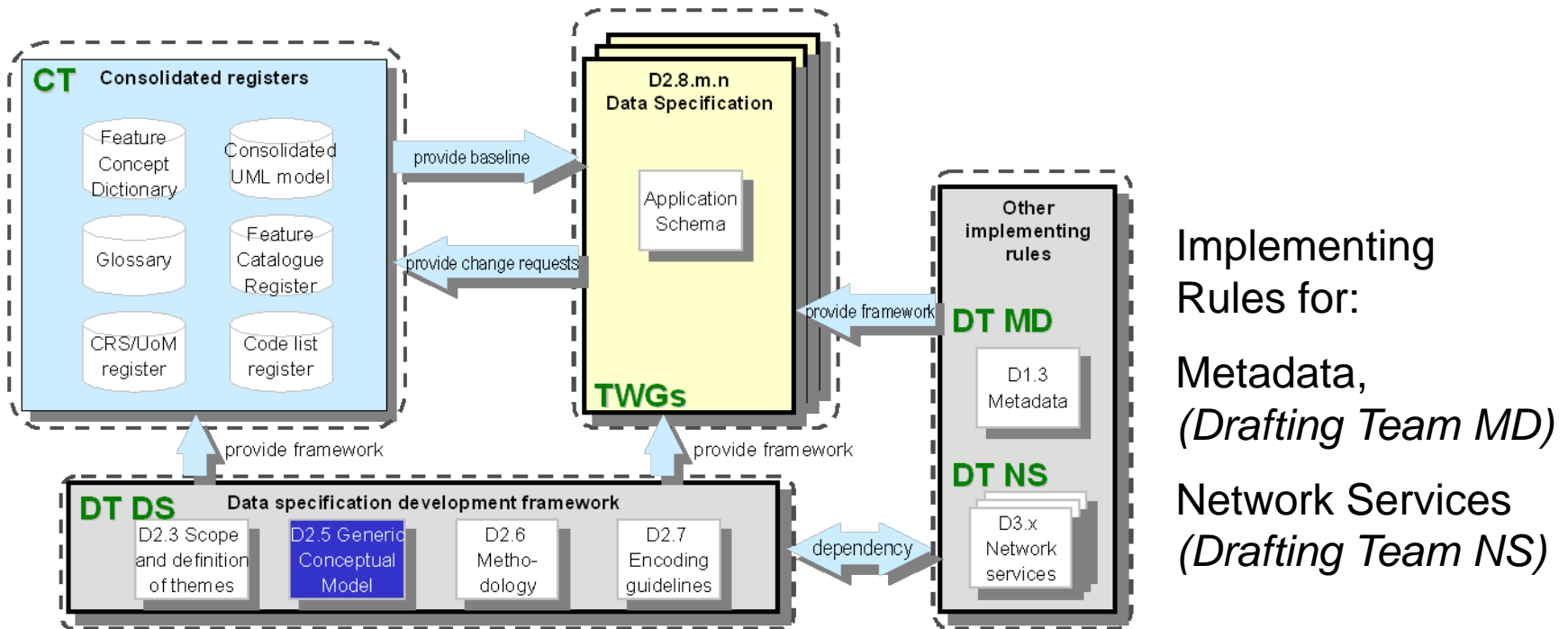
The implementing rules (for data according to Annex I and II) shall address the following aspects of spatial data:

- the **definition and classification of spatial objects**
- the way in which those spatial data are **geo-referenced**.
- a common framework for the **unique identification** of spatial objects
- the **relationship** between spatial objects;
- the **key attributes** and the corresponding multilingual thesauri commonly required for policies which may have an impact on the environment;
- information on the **temporal dimension** of the data;
- **updates** of the data.

Data specification development: Framework

Consolidated UML model
(*European Commission*)

Data Specifications for the Themes
(*Thematic Working Groups*)



Guideline Documents
(*Drafting Team ,Data Specifications'*)

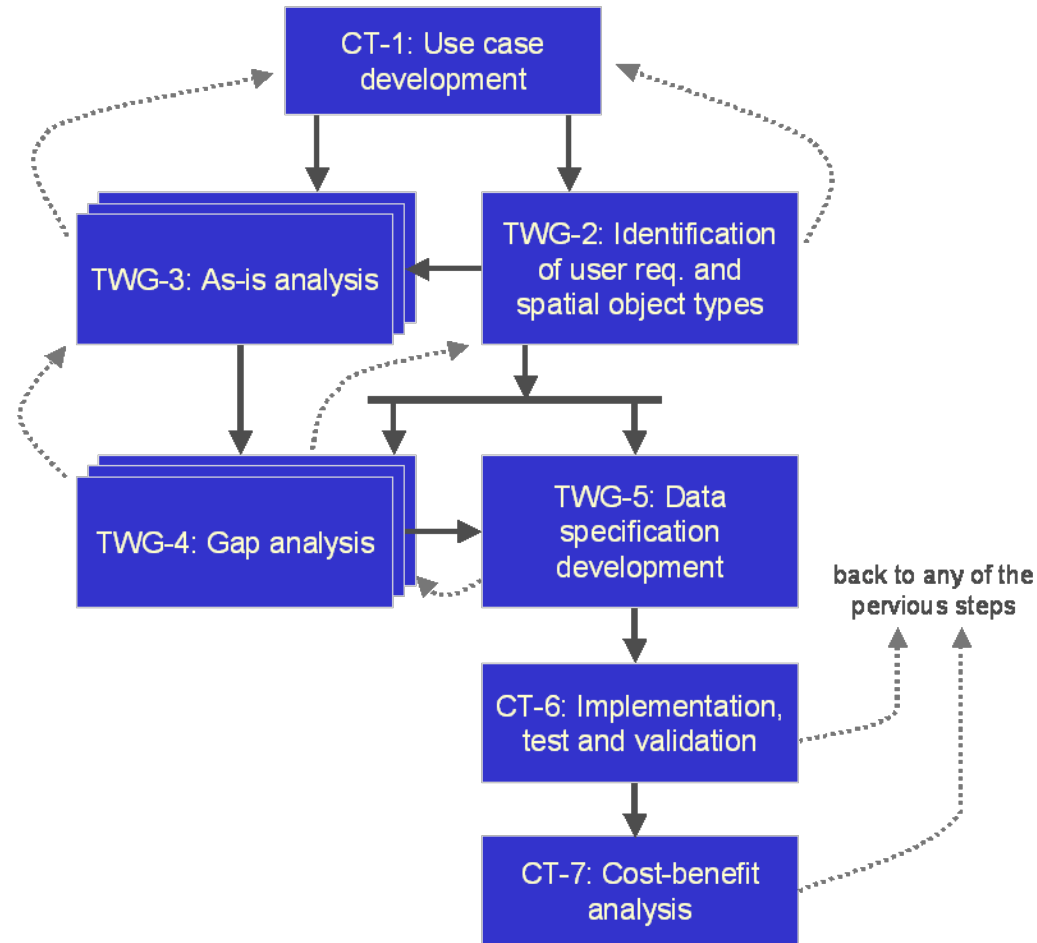
Implementing
Rules for:
Metadata,
(*Drafting Team MD*)
Network Services
(*Drafting Team NS*)

Data specification development: Reference material

Drafting Teams and TWGs must consider:

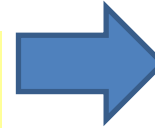
- The requirements from the INSPIRE Directive
- Reference material submitted by SDICs and LMOs
- internationally accepted standards (ISO 19100, OGC, others)

Data specification development: Process



Data specification development: Results

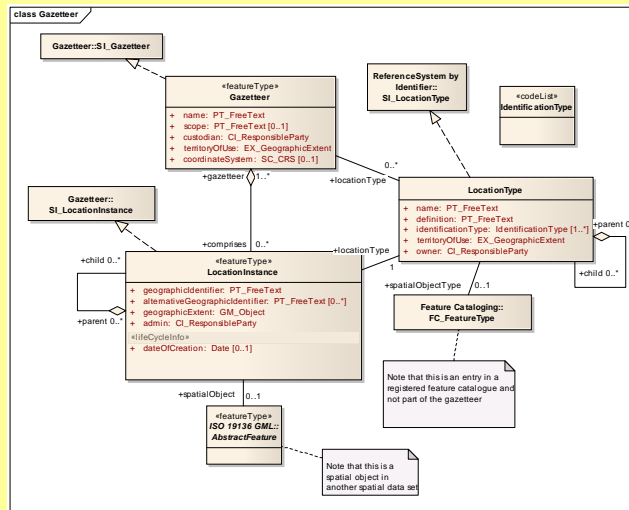
TWGs shall develop a **data specification** according to ISO 19131 which includes an **application schema** in UML



Commission Services will split into:

Implementing Rules
(legal text)

Guidance Document
(not binding)



INSPIRE data specifications schedule: (1) Drafting

- 30 Sep 2008 data specification v1.0
for **internal review** by CT, DT DS, other
TWGs and EIONET
- 01 Dec 2008 data specification v2.0
for **review by stakeholders** (SDICs & LMOs)
- 31 Mar 2009 data specification v3.0
submitted to **INSPIRE Committee for voting**
- 15 May 2009 Implementing rules adopted

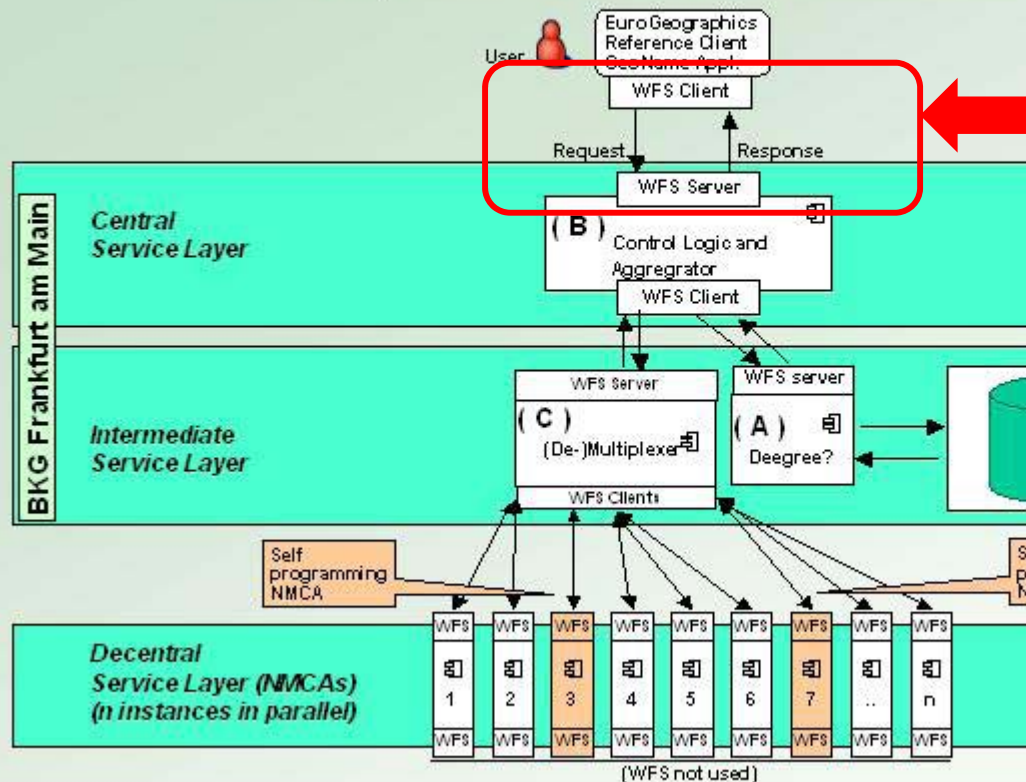
INSPIRE data specifications schedule:

(2) Implementation for Annex 1 Themes

- 15 May 2010 **Metadata** created,
discovery services up and running
- 15 May 2011 (adoption data specifications + two years):
all newly collected and extensively restructured spatial data sets
and the corresponding spatial data services
are available in conformity with the
implementing rules
- 15 May 2016 (adoption data specifications + seven years)
other spatial data sets still in use are
available in conformity

INSPIRE <> EuroGeoNames

Pipelined WFS Connection

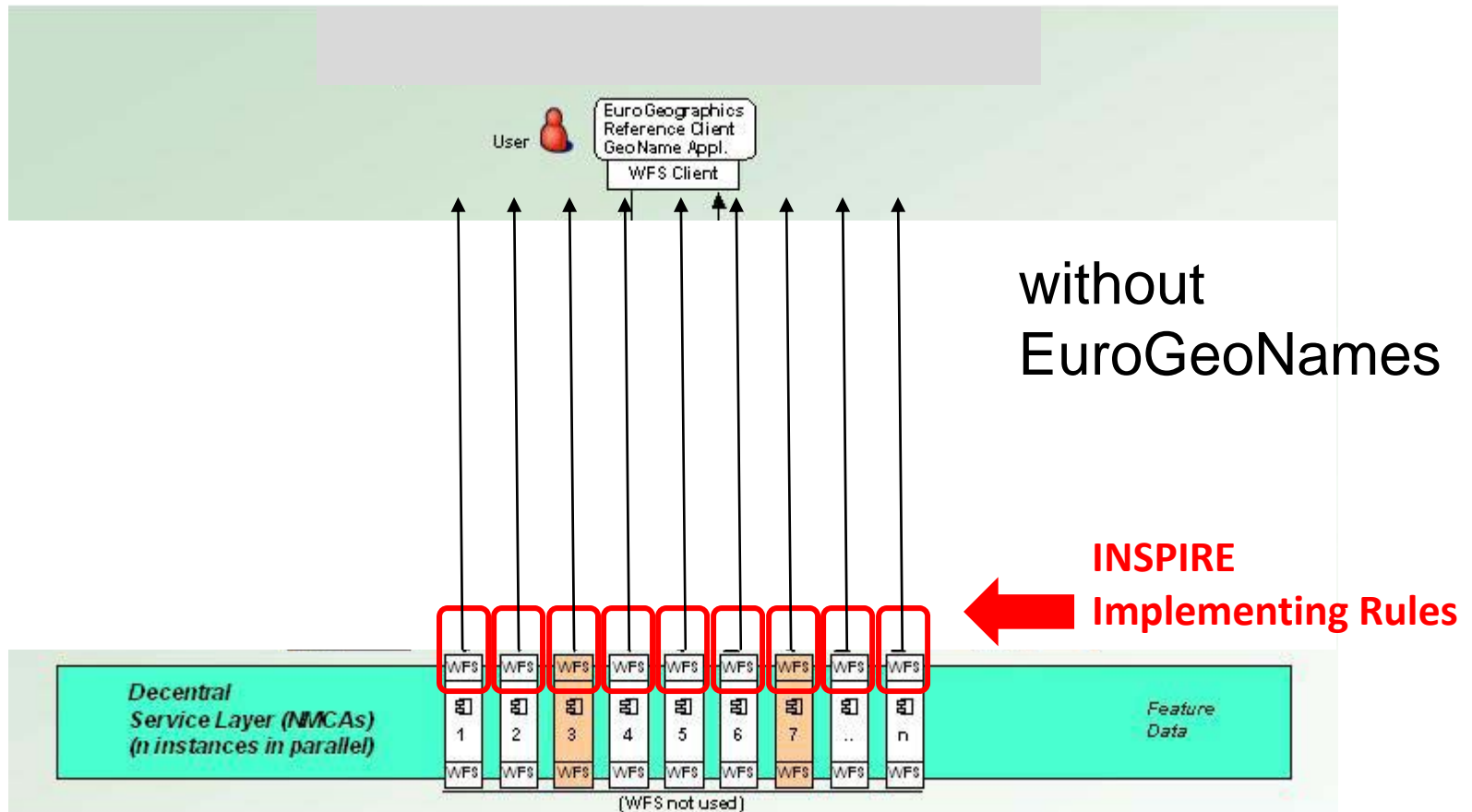


INSPIRE Implementing Rules define the data model and the network services for **publishing of data** as it exists

INSPIRE Implementing Rules might **not** spell out requirements on data content and data quality. It is on the data providers to make their products fit for European applications !

EuroGeoNames IT Architecture Issues, Frankfurt am Main, August 20th, 2007

INSPIRE <> EuroGeoNames



EuroGeoNames IT Architecture Issues, Frankfurt am Main, August 20th, 2007