

ECP 2005 GEO 038026 EGN

EGN

Exonyms and other variant names database specification¹

Deliverable number	<i>D5.6</i>
Dissemination level	<i>Public</i>
Delivery date	<i>15 September 2008</i>
Status	<i>Final</i>
Author(s)	<i>Jörgen Spradau, Roman Stani-Fertl</i>



eContentplus

This project is funded under the *eContentplus* programme²,
a multiannual Community programme to make digital content in Europe more accessible, usable and exploitable.

¹ The title of the database has been amended to “Database of Exonyms and Other Variant Names”.

² OJ L 79, 24.3.2005, p. 1.



Summary

The Database of Exonyms and Other Variant Names (EVN-DB) will provide important exonyms and other variant names assigned to geographical features, which are not maintained by National Mapping and Cadastral Agencies. It is a supplement database to the EuroGeoNames Central Service. The structure of the EVN-DB is documented. Tables and their attributes are described in detail. The core of the database is the table of the exonyms and other variant names (*TAB_VariantNames*) containing all relevant attributes to the respective name. For every table a detailed description of its attributes, data types, sizes, and indices is given.

Table of Contents

Summary	2
Table of Contents	3
1 Introduction	4
1.1 Purpose of the document.....	4
1.2 Description of the content.....	4
1.3 Description of the database	4
1.4 Change summary	4
1.5 Related Documents	5
1.6 Acronyms and Abbreviations	5
2 Database model.....	6
2.1 EGN Database of Exonyms and Other Variant Names - diagram	6
2.2 Relationships	7
3 Description of tables	8
3.1 TAB_ClassificationStatus	8
3.2 TAB_CountryCode	10
3.3 TAB_Data_Language	12
3.4 TAB_Gazetteer_Entry	14
3.5 TAB_Gender.....	16
3.6 TAB_Timestamp.....	17
3.7 TAB_LanguageCode	18
3.8 TAB_Metadata.....	20
3.9 TAB_MetadataLink	22
3.10 TAB_Number.....	23
3.11 TAB_Transcription.....	24
3.12 TAB_VariantNames	25
3.13 TAB_Publication_Language	28
3.14 TAB_FeatureClass	29

1 Introduction

1.1 Purpose of the document

This document is designed to provide an overview about the content and the structure of the EGN Database of Exonyms and Other Variant Names (EVN-DB). It shows the data model for collecting and maintaining exonyms and other variant names. The design and content is based on the objectives of work package 5 of the EGN project in the “Description of Work” [DoW] and the requirements presented in deliverables “Exonyms guidelines synopsis” [D 5.1] and “Methodology for the validation of existing exonyms” [D 5.2].

1.2 Description of the content

This document describes the data model of the database and shows its structure. It provides an exhaustive list of the tables, their relationships, attributes, data types, sizes, and indices. A description at the end of each attribute provides information about the function of the attributes.

1.3 Description of the database

The EVN-DB will comprise important names of geographical features in the official languages of the participating countries not maintained by the NMCAs. For detailed information refer to the “Exonyms Guidelines Synopsis” [D 5.1].

EVN-DB supplies three different categories of information for each entry if the source of the exonym and other variant name is providing the appropriate specifications.

- *TAB_VariantNames* - information about the exonym or other variant name (language, gender, number, pronunciation,...)
- *TAB_Metadata* - information about the sources providing the data (contact, editor, year, language,...)
- *TAB_Gazetteer_Entry* - temporary information for assigning the datasets of exonyms and other variant names to the appropriate entry in the respective national names database. These fields will be replaced after linking the datasets with the appropriate spatial object unique identifier as provided later by the NMCAs. (endonym, coordinates, feature class,...)

These three tables form the core of the EVN-DB.

The EVN-DB is designed as a “Microsoft SQL Server Express” database. The structure of this database is compatible to most other relational database management system (RDBMS). Datasets are recorded via Open Database Connectivity (ODBC) and “Microsoft Access” forms. A web interface based on Microsoft Active Server Pages .NET (ASP.NET) is the current method for editing the datasets.

1.4 Change summary

This document replaces [D 5.3] Documentation of Variant Names/Exonyms Database – Prototype. For details on change summary see [D 5.3]

Name	Date	Version
Spradau, Stani-Fertl, Sievers, Zaccheddu	15/09/2008	1.0

1.5 Related Documents

- [D 5.1] EGN Exonyms guidelines synopsis; 8th February 2008
- [D 5.2] EGN Methodology for the validation of existing exonyms; 8th February 2008
- [D 5.3] Documentation of Variant Names/Exonyms Database – Prototype; 11th July 2008
- [DoW] EGN Description of Work. BKG; 2006
- [UNGE GN WG on Country Names] UNGE GN WG on Country Names, List of Country Names, E/Conf.94/CRP.11, 31 May 2002
- [Foreign Office, Country Names] Länderverzeichnis für den amtlichen Gebrauch in Deutschland, Auswärtiges Amt, Berlin, 2006
- [ISO 3166-1] ISO 3166-1:2006-11, Codes for the representation of names of countries and their subdivisions – Part 1: Country codes
- [ISO 3166-2] ISO 3166-2:1998-12, Codes for the representation of names of countries and their subdivisions – Part 2: Country subdivision codes
- [ISO 639-1] ISO 639-1:2002, Codes for the representation of names of languages – Part 1: Alpha-2 code
- [ISO 639-2] ISO 639-2:1998-11, Codes for the representation of names of languages – Part 2: Alpha-3 code

1.6 Acronyms and Abbreviations

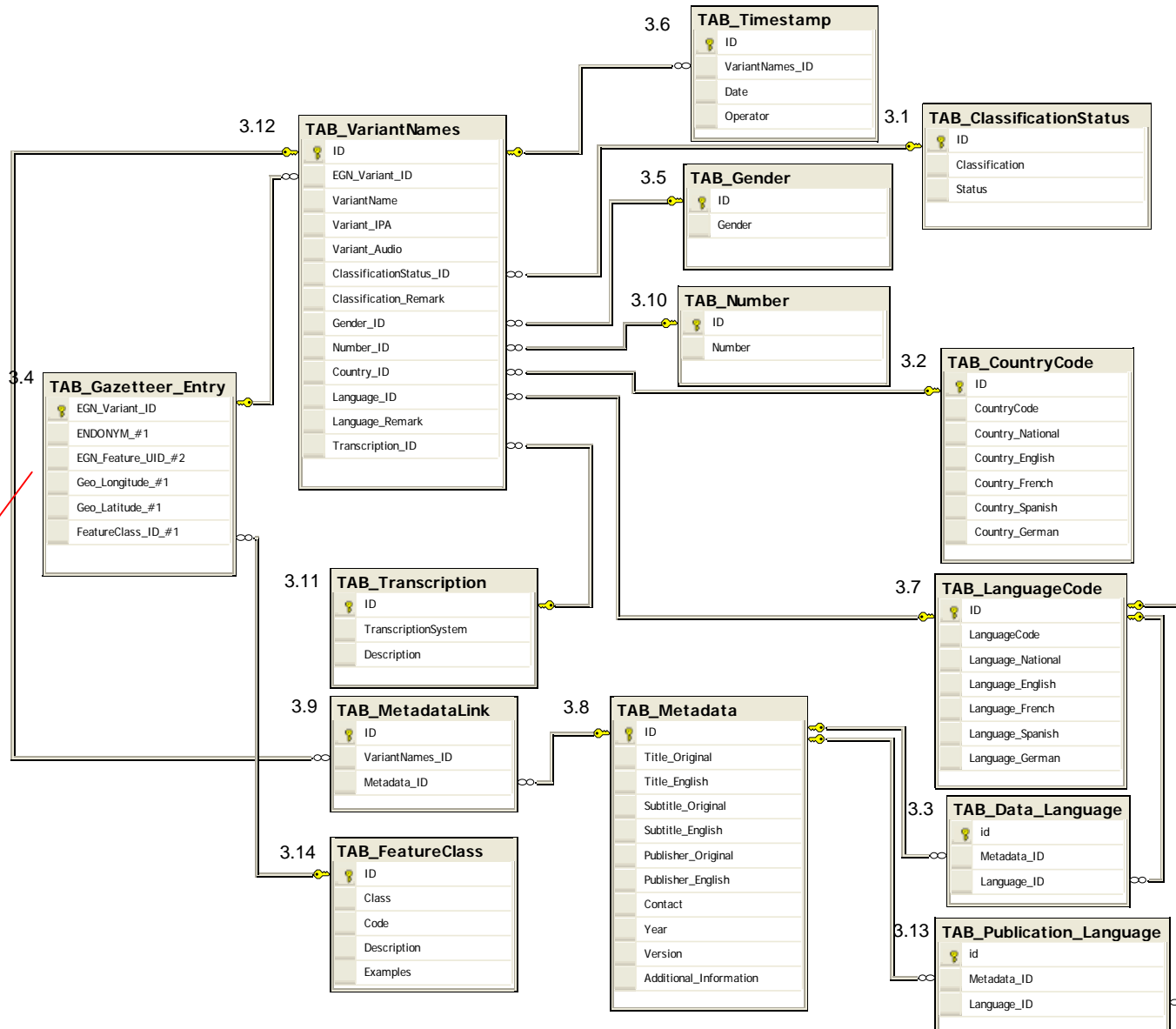
DoW	EGN Description of Work
EVN-DB	Database of Exonyms and other Variant Names
IPA	International Phonetic Association
n.a.	not available
NMCA	National Mapping and Cadastral Agency
StAGN	Ständiger Ausschuss für geographische Namen; (Permanent Committee on Geographical Names)
UNGE GN	United Nations Group of Experts on Geographical Names

2 Database model

2.1 EGN Database of Exonyms and Other Variant Names - diagram

_#1:
Temporarily used attributes only for the initial population of the “EGN Database of Exonyms and Other Variant Names”. Attributes will be removed when connected to “EGN Central Service”

_#2:
Attribute EGN_Feature_UID (corresponding to EGN_SpatialObject_UID in the EGN Central Service) can be populated when connection to “EGN Central Service” will be established.



2.2 Relationships

TAB_Gazetteer_Entry.EGN_Variant_ID	1	←----→	1..*	TAB_VariantNames.EGN_Variant_ID
TAB_Gazetteer_Entry.FeatureClass_ID_#1	0..*	←----→	1	TAB_FeatureClass.ID
TAB_VariantNames.ID	1	←----→	1..*	TAB_Timestamp.VariantNames_ID
TAB_VariantNames.ClassificationStatus_ID	0..*	←----→	1	TAB_ClassificationStatus.ID
TAB_VariantNames.Gender_ID	0..*	←----→	1	TAB_Gender.ID
TAB_VariantNames.Number_ID	0..*	←----→	1	TAB_Number.ID
TAB_VariantNames.Country_ID	0..*	←----→	1	TAB_CountryCode.ID
TAB_VariantNames.Language_ID	0..*	←----→	1	TAB_Language.ID
TAB_VariantNames.ID	1	←----→	1..*	TAB_MetadataLink.VariantNames_ID
TAB_VariantNames.Transcription_ID	0..*	←----→	1	TAB_Transcription.ID
TAB_Metadata.ID	1	←----→	0..*	TAB_MetadataLink.Metadata_ID
TAB_Metadata.ID	1	←----→	0..*	TAB_Data_Language.Metadata_ID
TAB_Metadata.ID	1	←----→	0..*	TAB_Publication_Language.Metadata_ID
TAB_Data_Language.Language_ID	0..*	←----→	1	TAB_Language.ID
TAB_Publication_Language.Language_ID	0..*	←----→	1	TAB_Language.ID

3 Description of tables

3.1 TAB_ClassificationStatus

Table showing the assignment of exonyms or other variant names to a certain class of toponyms (*endonym variant, exonym standardized, exonym not standardized*) and to a certain status of the names regarding the source they are derived from (*approved, other*) [D 5.2].

Attributes

Name	Type	Size
ID AllowZeroLength: False Attributes: Auto-Inkrement DataUpdatable: False Required: True SourceField: ID SourceTable: TAB_ClassificationStatus Description: Identifier of this table	Long Integer	
Classification AllowZeroLength: True Attributes: Variable Length DataUpdatable: True DisplayControl: Textfield Required: False SourceField: Classification SourceTable: TAB_ClassificationStatus UnicodeCompression: True Description: Enumerated list indicating the class of the exonym / variant name. Three different classes are distinguished.	Character	25
Status AllowZeroLength: True Attributes: Variable Length DataUpdatable: True DisplayControl: Textfield Required: False SourceField: Status SourceTable: TAB_ClassificationStatus UnicodeCompression: True Description: Enumerated list indicating the data source type the name is derived from. Two types are distinguished.	Character	15

Table indices

IgnoreNulls:	False
Name:	ID
Required:	True
Unique:	True
Primary Key:	True

Table contents

ID	Classification	Status
1	exonym standardized	approved
2	exonym standardized	other
3	exonym not standardized	other
4	endonym variant	approved
5	endonym variant	other

3.2 TAB_CountryCode

Table holding the country code according to ISO 3166-1 alpha-2 code of the country in which the named feature is located. The country name is displayed in its short form and is provided in its national language(s) as well as English, French, Spanish, and German.

Attributes

Name	Type	Size
ID AllowZeroLength: False Attributes: Auto-Inkrement DataUpdatable: False Required: True SourceField: ID SourceTable: TAB_CountryCode Description: Identifier of this table	Long Integer	
CountryCode AllowZeroLength: False Attributes: Fixed Length DataUpdatable: True DisplayControl: Textfield Required: True SourceField: CountryCode SourceTable: TAB_CountryCode UnicodeCompression: True Description: Country code according to [ISO 3166-1]	Character	2
Country_National AllowZeroLength: False Attributes: Variable Length DataUpdatable: True DisplayControl: Textfield Required: True SourceField: Country_National SourceTable: TAB_CountryCode UnicodeCompression: True Description: Short form of the name of the respective country in the national language(s) [UNGEKN WG on Country Names].	Character	50
Country_English AllowZeroLength: False Attributes: Variable Length DataUpdatable: True DisplayControl: Textfield Required: True SourceField: Country_English SourceTable: TAB_CountryCode UnicodeCompression: True Description: Short form of the name of the respective country in English [UNGEKN WG on Country Names].	Character	50
Country_French AllowZeroLength: False Attributes: Variable Length DataUpdatable: True DisplayControl: Textfield Required: True SourceField: Country_French SourceTable: TAB_CountryCode UnicodeCompression: True Description: Short form of the name of the respective country in French [UNGEKN WG on Country Names].	Character	50
Country_Spanish AllowZeroLength: False Attributes: Variable Length	Character	50

DataUpdatable:	True
DisplayControl:	Textfield
Required:	True
SourceField:	Country_Spanish
SourceTable:	TAB_CountryCode
UnicodeCompression:	True
Description:	Short form of the name of the respective country in Spanish [UNGEGN WG on Country Names].

Country_German Character 50

AllowZeroLength:	False
Attributes:	Variable Length
DataUpdatable:	True
DisplayControl:	Textfield
Required:	True
SourceField:	Country_German
SourceTable:	TAB_CountryCode
UnicodeCompression:	True
Description:	Short form of the name of the respective country in German [Foreign Office, Country Names].

Table indices

IgnoreNulls:	False
Name:	ID
Required:	True
Unique:	True
Primary Key:	True
Name:	Country_National
Primary Key:	False

3.3 TAB_Data_Language

Table indicating the language(s) in which the exonyms or other variant names are maintained in the publication. For explanation see “Case diagram”.

Attributes

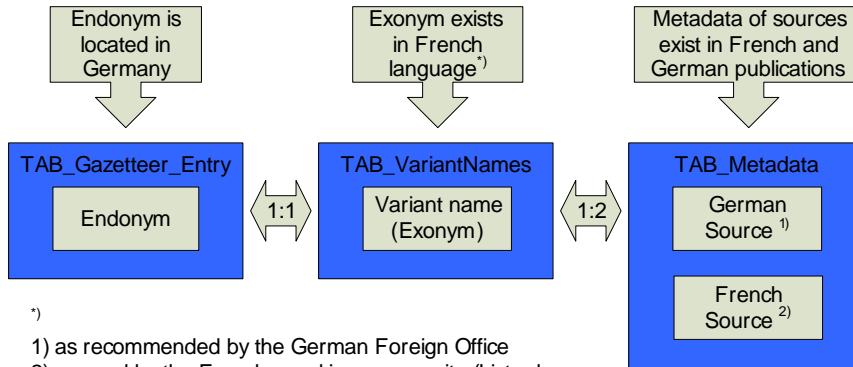
Name	Type	Size
ID AllowZeroLength: False Attributes: Auto-Inkrement DataUpdatable: False Required: True SourceField: ID SourceTable: TAB_Data_Language Description: Identifier of this table	Long Integer	
Metadata_ID AllowZeroLength: False Attributes: Fixed Length DataUpdatable: True DisplayControl: Textfield Required: True SourceField: ID SourceTable: TAB_Metadata UnicodeCompression: True Description: Foreign key to TAB_Metadata. Identifies the metadata entry.	Character	10
Language_ID AllowZeroLength: False Attributes: DataUpdatable: True Required: True SourceField: ID SourceTable: TAB_LanguageCode Description: Foreign key to TAB_LanguageCode. Identifies the language(s) of the publication of the metadata entry.	Long Integer	

Table indices

IgnoreNulls:	False
Name:	ID
Required:	True
Unique:	True
Primary Key:	True

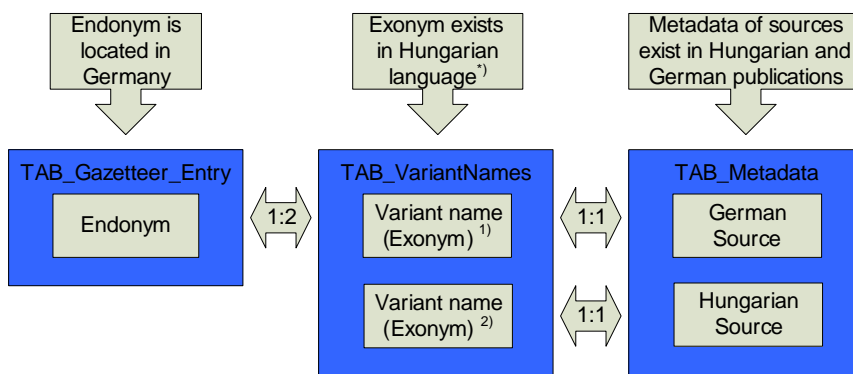
Case diagram

Example: State of the FRG „Hessen“ (German endonym) – „Hesse“ (French exonym)



*)
 1) as recommended by the German Foreign Office
 2) as used by the French speaking community (Liste des exonymes des pays, capitales et divisions administratives de l'Europe. Romano-Hellenic Division of UNGEGN, 1992)

Example: State of the FRG „SachsenAnhalt“ (German endonym)



*)
 1) „Szászország-Anhalt“ (Hungarian exonym recommended by the German Foreign Office)
 2) „Szász-Anhalt“ (List of Hungarian Exonyms by András Dutkó presented in Prague 2007)

3.4 TAB_Gazetteer_Entry

Table containing data necessary for identifying and assigning an exonym or other variant name to the corresponding entry (nationally provided endonym) in the respective names database of a NMCA.

- _#1: Temporarily used attributes only for the initial population of the “EGN Database of Exonyms and Other Variant Names”. Attributes will be removed when connected to “EGN Central Service”
- _#2: Attribute EGN_Feature_UID (corresponding to “EGN_SpatialObject_UID in the EGN Central Service) can be populated when connection to “EGN Central Service” will be established.

Attributes

Name	Type	Size
EGN_Variant_ID AllowZeroLength: False Attributes: Fixed Length DataUpdatable: False DisplayControl: Textfield Required: True SourceField: EGN_Variant_ID SourceTable: TAB_Gazetteer_Entry Description: Unique identifier of this table, based on Microsoft Unique Identifier	Unique Identifier	16
ENDONYM_#1 AllowZeroLength: True Attributes: Variable Length DataUpdatable: True DisplayControl: Textfield Required: False SourceField: ENDONYM_#1 SourceTable: TAB_Gazetteer_Entry UnicodeCompression: True Description: Standardized name form maintained by a NMCA.	Character	100
EGN_Feature_UID_#2 AllowZeroLength: False Attributes: Variable Length DataUpdatable: True DisplayControl: Textfield Required: True SourceField: EGN_SpatialObject_UID SourceTable: TAB_Gazetteer_Entry UnicodeCompression: True Description: Unique identifier of a dataset (spatial object) of the EGN Central Service	Character	-
Geo_Longitude_#1 AllowZeroLength: True Attributes: Variable Length DataUpdatable: True DisplayControl: Textfield Required: False SourceField: Geo_Longitude_#1 SourceTable: TAB_Gazetteer_Entry UnicodeCompression: True Description: Geographical longitude of the feature in geographical degrees.	Character	15
Geo_Latitude_#1 AllowZeroLength: True Attributes: Variable Length DataUpdatable: True DisplayControl: Textfield Required: False SourceField: Geo_Latitude_#1 SourceTable: TAB_Gazetteer_Entry UnicodeCompression: True Description: Geographical latitude of the feature in geographical degrees.	Character	15

FeatureClass_ID Long Integer
AllowZeroLength: False
Attributes:
DataUpdatable: True
Required: True
SourceField: ID
SourceTable: TAB_FeatureClass
Description: Foreign key to TAB_FeatureClass

Table indices

IgnoreNulls: False
Name: EGN_Variant_ID
Required: True
Unique: True
Primary Key: True

Name: EGN_SpatialObject_UID_#2
Primary Key: False

Name: ENDONYM_#1
Primary Key: False

3.5 TAB_Gender

Table indicating the grammatical gender of the exonym or other variant name.

Attributes

Name	Type	Size
ID AllowZeroLength: False Attributes: Auto-Inkrement DataUpdatable: False Required: True SourceField: ID SourceTable: TAB_Gender Description: Identifier of this table	Long Integer	
Gender AllowZeroLength: False Attributes: Variable Length DataUpdatable: False DisplayControl: Textfield Required: True SourceField: Gender SourceTable: TAB_Gender UnicodeCompression: True Description: Enumerated list of possible values of the grammatical gender	Character	10

Table indices

IgnoreNulls:	False
Name:	ID
Required:	True
Unique:	True
Primary Key:	True

Table contents

ID	Gender
1	masculine
2	feminine
3	neuter
4	common
5	n. a.

3.6 TAB_Timestamp

Table containing information about entries and updates of the datasets of the EGN Database of Exonyms and Other Variant Names.

Attributes

Name	Type	Size
ID AllowZeroLength: False Attributes: Auto-Inkrement DataUpdatable: False Required: True SourceField: ID SourceTable: TAB_Timestamp Description: Identifier of this table	Long Integer	
VariantNames_ID AllowZeroLength: False Attributes: DataUpdatable: True Required: True SourceField: ID SourceTable: TAB_VariantNames Description: Foreign key to TAB_VariantNames.	Long Integer	
Date AllowZeroLength: False Attributes: Fixed Length ("DD.MM.YYYY") DataUpdatable: True Required: True SourceField: Date SourceTable: TAB_Timestamp Description: Date of the entry or update of a dataset	Date/Time	10
Operator AllowZeroLength: False Attributes: Variable Length DataUpdatable: True DisplayControl: Textfield Required: True SourceField: Operator SourceTable: TAB_Timestamp UnicodeCompression: True Description: Toponymic authority which has conducted the amendments	Character	50

Table indices

IgnoreNulls:	False
Name:	ID
Required:	True
Unique:	True
Primary Key:	True
Name:	VariantNames_ID
Primary Key:	False

3.7 TAB_LanguageCode

Table holding the codes for the representation of names of languages according to [ISO 639-2 Alpha-3 code]. The names of the languages are provided in the national language, English, French, Spanish, and German.

Attributes

Name	Type	Size
ID AllowZeroLength: False Attributes: Auto-Inkrement DataUpdatable: False Required: True SourceField: ID SourceTable: TAB_LanguageCode Description: Identifier of this table.	Long Integer	
LanguageCode AllowZeroLength: False Attributes: Fixed Length DataUpdatable: False DisplayControl: Textfield Required: True SourceField: LanguageCode SourceTable: TAB_LanguageCode UnicodeCompression: True Description: Language code according to [ISO 639-2].	Character	3
Language_National AllowZeroLength: False Attributes: Variable Length DataUpdatable: False DisplayControl: Textfield Required: True SourceField: Language_National SourceTable: TAB_LanguageCode UnicodeCompression: True Description: Representation of the name of the national language in its own language (to be determined by the respective language group) [ISO 639-1] and other sources.	Character	50
Language_English AllowZeroLength: False Attributes: Variable Length DataUpdatable: False DisplayControl: Textfield Required: True SourceField: Language_English SourceTable: TAB_LanguageCode UnicodeCompression: True Description: Representation of the name of the language in English [ISO639-2].	Character	50
Language_French AllowZeroLength: False Attributes: Variable Length DataUpdatable: False DisplayControl: Textfield Required: True SourceField: Language_French SourceTable: TAB_LanguageCode UnicodeCompression: True Description: Representation of the name of the language in French [ISO639-2].	Character	50
Language_Spain AllowZeroLength: False Attributes: Variable Length DataUpdatable: False DisplayControl: Textfield	Character	50



Required: True
 SourceField: Language_Spain
 SourceTable: TAB_LanguageCode
 UnicodeCompression: True
 Description: Representation of the name of the language in Spanish (to be checked by an expert of the Spanish language group).

Language_German Character 50

AllowZeroLength: False
 Attributes: Variable Length
 DataUpdatable: False
 DisplayControl: Textfield
 Required: True
 SourceField: Language_German
 SourceTable: TAB_LanguageCode
 UnicodeCompression: True
 Description: Representation of the name of the language in German (to be checked by StAGN).

Table indices

IgnoreNulls: False
 Name: ID
 Required: True
 Unique: True
 Primary Key: True

 Name: Language_National
 Primary Key: False

3.8 TAB_Metadata

Table consisting information on the sources (lists or files of exonyms or other variant names) used for filling the EGN Database of Exonyms and Other Variant Names.

Attributes

Name	Type	Size
ID AllowZeroLength: False Attributes: Fixed Length DataUpdatable: False DisplayControl: Textfield Required: True SourceField: ID SourceTable: TAB_Metadata UnicodeCompression: True Description: Identifier of this table	Character	10
Title_Original AllowZeroLength: True Attributes: Variable Length DataUpdatable: True DisplayControl: Textfield Required: False SourceField: Title_Original SourceTable: TAB_Metadata UnicodeCompression: True Description: Title or header of the source in its original language	Character	250
Title_English AllowZeroLength: True Attributes: Variable Length DataUpdatable: True DisplayControl: Textfield Required: False SourceField: Title_English SourceTable: TAB_Metadata UnicodeCompression: True Description: Title or header of the source in English	Character	250
Subtitle_Original AllowZeroLength: True Attributes: Variable Length DataUpdatable: True DisplayControl: Textfield Required: False SourceField: Subtitle_Original SourceTable: TAB_Metadata UnicodeCompression: True Description: Subtitle or sub-header of the source in its original language	Character	250
Subtitle_English AllowZeroLength: True Attributes: Variable Length DataUpdatable: True DisplayControl: Textfield Required: False SourceField: Subtitle_English SourceTable: TAB_Metadata UnicodeCompression: True Description: Subtitle or sub-header of the source in English	Character	250
Publisher_Original AllowZeroLength: True Attributes: Variable Length DataUpdatable: True DisplayControl: Textfield	Character	250

Required: False
 SourceField: Publisher_Original
 SourceTable: TAB_Metadata
 UnicodeCompression: True
 Description: Original name of the body or institution publishing the source

Publisher_English Character 250

AllowZeroLength: True
 Attributes: Variable Length
 DataUpdatable: True
 DisplayControl: Textfield
 Required: False
 SourceField: Publisher_English
 SourceTable: TAB_Metadata
 UnicodeCompression: True
 Description: English name of the body or institution publishing the source

Contact Character 250

AllowZeroLength: True
 Attributes: Variable Length
 DataUpdatable: False
 DisplayControl: Textfield
 Required: False
 SourceField: Contact
 SourceTable: TAB_Metadata
 UnicodeCompression: False
 Description: Name of the contact person or data provider

Year Character 10

AllowZeroLength: True
 Attributes: Variable Length
 DataUpdatable: True
 DisplayControl: Textfield
 Required: False
 SourceField: Year
 SourceTable: TAB_Metadata
 UnicodeCompression: True
 Description: Year when the source was published

Version Character 100

AllowZeroLength: True
 Attributes: Variable Length
 DataUpdatable: True
 DisplayControl: Textfield
 Required: False
 SourceField: Version
 SourceTable: TAB_Metadata
 UnicodeCompression: True
 Description: Any reference to the edition of the source

Additional_Information Memo -

AllowZeroLength: True
 Attributes: Variable Length
 DataUpdatable: True
 DisplayControl: Textfield
 Required: False
 SourceField: Additional_Information
 SourceTable: TAB_Metadata
 UnicodeCompression: True
 Description: Additional information to the source, its content, or its publisher

Table indices

IgnoreNulls: False
 Name: ID
 Required: True
 Unique: True
 Primary Key: True

3.9 TAB_MetadataLink

Table linking metadata with exonyms or other variant names.

Attributes

Name	Type	Size
ID AllowZeroLength: False Attributes: Auto-Inkrement DataUpdatable: False Required: True SourceField: ID SourceTable: TAB_MetadataLink Description: Identifier of this table	Long Integer	
VariantNames_ID AllowZeroLength: False Attributes: DataUpdatable: True Required: True SourceField: ID SourceTable: TAB_VariantNames Description: Foreign key to TAB_VariantNames.	Long Integer	
Metadata_ID AllowZeroLength: False Attributes: Fixed Length DataUpdatable: True DisplayControl: Textfield Required: True SourceField: ID SourceTable: TAB_Metadata UnicodeCompression: True Description: Foreign key to TAB_Metadata. Identifies the metadata entry.	Character	10

Table indices

IgnoreNulls:	False
Name:	ID
Required:	True
Unique:	True
Primary Key:	True
Name:	Metadata_ID
Primary Key:	False

3.10 TAB_Number

Table listing the grammatical number of an exonym or other variant name.

Attributes

Name	Type	Size
ID AllowZeroLength: False Attributes: Auto-Inkrement DataUpdatable: False Required: True SourceField: ID SourceTable: TAB_Number Description: Identifier of this table	Long Integer	
Number AllowZeroLength: False Attributes: Variable Length DataUpdatable: False DisplayControl: Textfield Required: True SourceField: Number SourceTable: TAB_Number UnicodeCompression: True Description: Enumerated list of values.	Character	10

Table indices

IgnoreNulls:	False
Name:	ID
Required:	True
Unique:	True
Primary Key:	True

Table contents

ID	Number
1	plural
2	singular
3	dual
4	n. a.

3.11 TAB_Transcription

Table listing Romanization systems used to transform exonyms and other variant names of Non-Roman scripts into Roman script.

Attributes

Name	Type	Size
ID AllowZeroLength: False Attributes: Auto-Inkrement DataUpdatable: False Required: True SourceField: ID SourceTable: TAB_Transcription Description: Identifier of this table	Long Integer	
TranscriptionSystem AllowZeroLength: False Attributes: Variable Length DataUpdatable: True DisplayControl: Textfield Required: True SourceField: TranscriptionSystem SourceTable: TAB_Transcription UnicodeCompression: True Description: Name of system system used for Romanization	Character	20
Description AllowZeroLength: True Attributes: Variable Length DataUpdatable: True DisplayControl: Textfield Required: False SourceField: Description SourceTable: TAB_Transcription UnicodeCompression: True Description: Descriptive information of the Romanization system used	Memo	-

Table indices

IgnoreNulls:	False
Name:	ID
Required:	True
Unique:	True
Primary Key:	True

3.12 TAB_VariantNames

Table containing exonyms and other variant names with their attributes and necessary information following the conditions of the EGN Description of Work. In this context exonyms and other variant names are forms of geographical names not maintained by the NMCAs. For a detailed description see [D5.2] chapter 3.

Attributes

Name	Type	Size
ID AllowZeroLength: False Attributes: Auto-Inkrement DataUpdatable: False Required: True SourceField: ID SourceTable: TAB_VariantNames Description: Identifier of this table	Long Integer	
EGN_Variant_ID AllowZeroLength: False Attributes: Fixed Length DataUpdatable: False DisplayControl: Textfield Required: True SourceField: EGN_Variant_ID SourceTable: TAB_Gazetteer_Entry Description: Foreign key to TAB_Gazetteer_Entry.	Unique Identifier	16
VariantName AllowZeroLength: False Attributes: Variable Length DataUpdatable: True DisplayControl: Textfield Required: True SourceField: VariantName SourceTable: TAB_VariantNames UnicodeCompression: True Description: Exonym or other variant name of a geographical feature	Character	100
Variant_IPA AllowZeroLength: True Attributes: Variable Length DataUpdatable: True DisplayControl: Textfield Required: False SourceField: Variant_IPA SourceTable: TAB_VariantNames UnicodeCompression: True Description: Pronunciation of the exonym or other variant name in IPA notation (International Phonetic Alphabet)	Character	100
Variant_Audio AllowZeroLength: True Attributes: Variable Length DataUpdatable: True DisplayControl: Textfield Required: False SourceField: Variant_Audio SourceTable: TAB_VariantNames UnicodeCompression: True Description: Pointer to an audio file of the exonym or other variant name	Character	250
ClassificationStatus_ID AllowZeroLength: False Attributes: DataUpdatable: True Required: True SourceField: ID	Long Integer	

SourceTable:	TAB_ClassificationStatus		
Description:	Foreign key to TAB_ClassificationStatus.		
Classification_Remark		Memo	-
AllowZeroLength:	True		
Attributes:	Variable Length		
DataUpdatable:	True		
Required:	False		
SourceField:	Classification_Remark		
SourceTable:	TAB_VariantNames		
UnicodeCompression:	True		
Description:	Additional information to the classification and the status of the exonym or other variant name		
Gender_ID		Long Integer	
AllowZeroLength:	True		
Attributes:			
DataUpdatable:	True		
Required:	False		
SourceField:	ID		
SourceTable:	TAB_Gender		
Description:	Foreign key to TAB_Gender		
Number_ID		Long Integer	
AllowZeroLength:	True		
Attributes:			
DataUpdatable:	True		
Required:	False		
SourceField:	ID		
SourceTable:	TAB_Number		
Description:	Foreign key to TAB_Number		
Country_ID		Long Integer	
AllowZeroLength:	False		
Attributes:			
DataUpdatable:	True		
Required:	True		
SourceField:	ID		
SourceTable:	TAB_CountryCode		
Description:	Foreign key to TAB_CountryCode. Country where the feature is situated.		
Language_ID		Long Integer	
AllowZeroLength:	False		
Attributes:			
DataUpdatable:	True		
Required:	True		
SourceField:	ID		
SourceTable:	TAB_LanguageCode		
Description:	Foreign key to TAB_LanguageCode. Language the exonym or other variant name belongs to.		
Language_Remark		Character	250
AllowZeroLength:	True		
Attributes:	Variable Length		
DataUpdatable:	True		
Required:	False		
SourceField:	Classification_Remark		
SourceTable:	TAB_VariantNames		
UnicodeCompression:	True		
Description:	Additional information to the language of the exonym or other variant name		
Transcription_ID		Long Integer	
AllowZeroLength:	True		
Attributes:			
DataUpdatable:	True		
Required:	False		
SourceField:	ID		
SourceTable:	TAB_Transcription		
Description:	Foreign key to TAB_Transcription. Transcriptioncode the exonym or other variant name belongs to.		

Table indices

IgnoreNulls:	False
Name:	ID
Required:	True
Unique:	True
Primary Key:	True
Name:	EGN_Variant_ID
Primary Key:	False
Name:	VariantName
Primary Key:	False

3.13 TAB_Publication_Language

Table identifying the language(s) a metadata entry is published.

Attributes

Name	Type	Size
ID AllowZeroLength: False Attributes: Auto-Inkrement DataUpdatable: False Required: True SourceField: ID SourceTable: TAB_Publication_Language Description: Identifier of this table	Long Integer	
Metadata_ID AllowZeroLength: False Attributes: Fixed Length DataUpdatable: True DisplayControl: Textfield Required: True SourceField: ID SourceTable: TAB_Metadata UnicodeCompression: True Description: Foreign key to TAB_Metadata. Identifies the metadata entry.	Character	10
Language_ID AllowZeroLength: False Attributes: DataUpdatable: True Required: True SourceField: ID SourceTable: TAB_LanguageCode Description: Foreign key to TAB_LanguageCode. Identifies the language(s) of the metadata entry.	Long Integer	

Table indices

IgnoreNulls:	False
Name:	ID
Required:	True
Unique:	True
Primary Key:	True

3.14 TAB_FeatureClass

Table identifying the geographical category a feature belongs to.

Attributes

Name	Type	Size
ID AllowZeroLength: False Attributes: Auto-Inkrement DataUpdatable: False Required: True SourceField: ID SourceTable: TAB_FeatureClass Description: Identifier of this table	Long Integer	
Class AllowZeroLength: False Attributes: Variable Length DataUpdatable: True DisplayControl: Textfield Required: True SourceField: Class SourceTable: TAB_FeatureClass UnicodeCompression: True Description: First level category of the geographical feature type catalogue of the EGN project	Character	50
Code AllowZeroLength: False Attributes: Variable Length DataUpdatable: True DisplayControl: Textfield Required: True SourceField: Code SourceTable: TAB_FeatureClass UnicodeCompression: True Description: Code for identifying the first level category of the geographical feature in the feature type catalogue of the EGN project	Character	50
Description AllowZeroLength: True Attributes: Variable Length DataUpdatable: True DisplayControl: Textfield Required: False SourceField: Description SourceTable: TAB_FeatureClass UnicodeCompression: True Description: Description of the feature class	Memo	-
Examples AllowZeroLength: True Attributes: Variable Length DataUpdatable: True DisplayControl: Textfield Required: False SourceField: Examples SourceTable: TAB_FeatureClass UnicodeCompression: True Description: Examples for the first level category of the feature type catalogue of the EGN project	Character	50

Table indices

IgnoreNulls:	False
Name:	ID
Required:	True
Unique:	True
Primary Key:	True
Name:	Code
Primary Key:	False

Table contents

Code	Feature Class	Description
1	Countries, administrative units, and other areas	Countries, territorial units of a country for administrative purposes and other manmade areas
2	Populated places	Buildings for housing of any category
3	Non-residential structures and buildings	Any kind of structures and buildings, except populated places, transport, telecommunication, and hydrographic features
4	Transport and telecommunication features	Structures related to transports and telecommunications
5	Terrain features	Land features of natural environment including vegetation. In general they are natural elements but can be modified by man
6	Hydrographic features	Natural or man-made features related to water
7	Conversation areas	Terrain or hydrographic conversation areas of natural environment and World Heritage Sites
8	Miscellaneous	Other type of features not included in subclasses 1 to 7