



Danish models inspired by INSPIRE

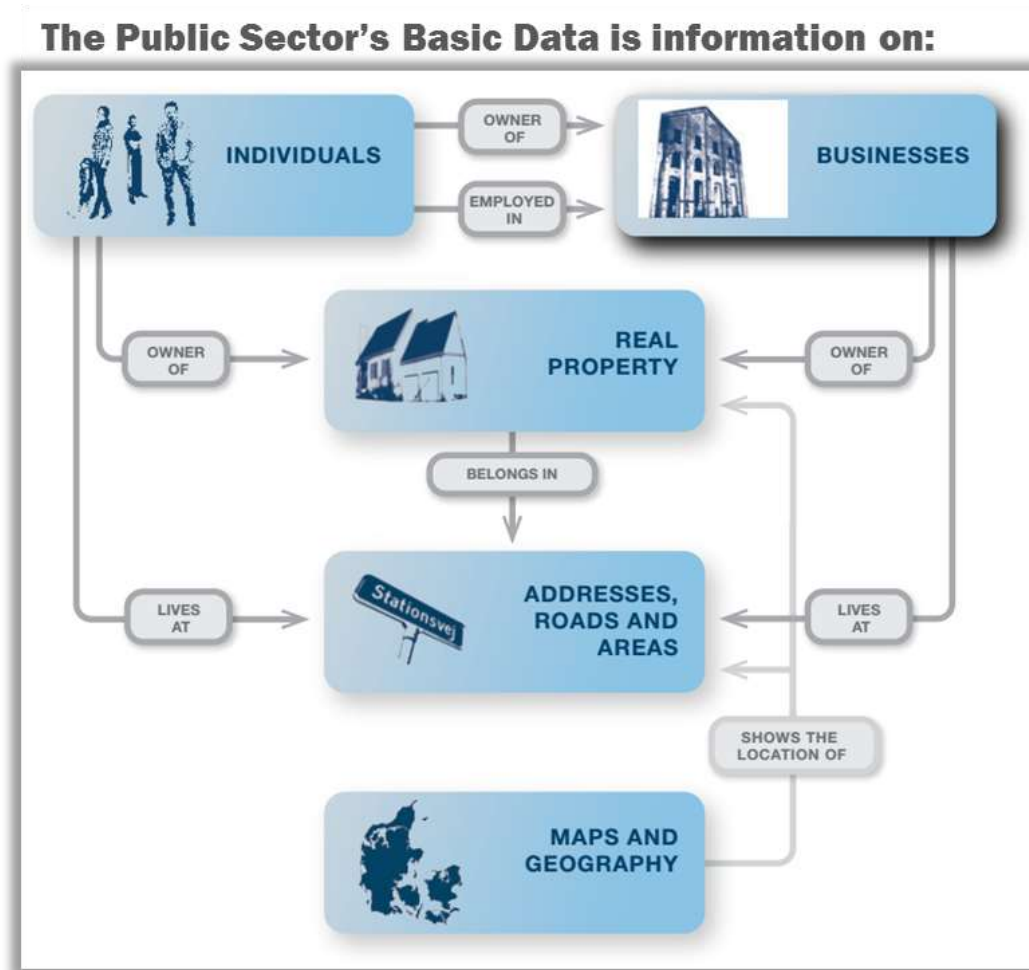
2 sets of modelling principles

INSPIRE modelling principles

vs.

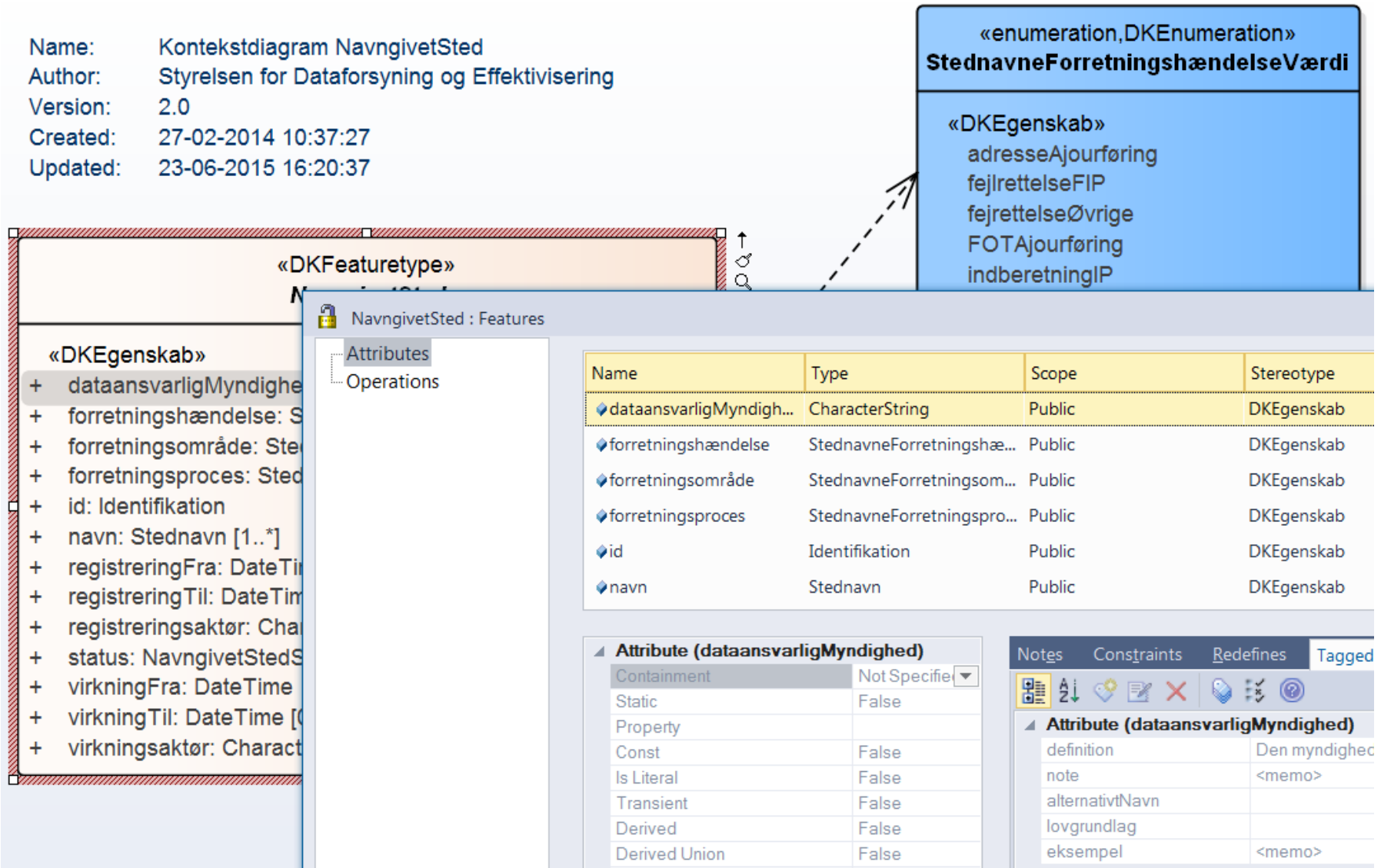
Danish Basic Data modelling principles

Danish Basic Data Programme



Danish modelling principles

Name: Kontekstdiagram NavngivetSted
Author: Styrelsen for Dataforsyning og Effektivisering
Version: 2.0
Created: 27-02-2014 10:37:27
Updated: 23-06-2015 16:20:37



After 4 years...

... common understanding

Role of modelling experts:

- help domain experts understanding their own data better
- derive storage (DDL) and exchange (GML) formats based on models
- keep INSPIRE data models in mind

... "Language issue"



domain 1 expert



domain 2 expert



IT expert

Fællesoffentlige regler for begrebs- og datamodellering

Version 1.0.0

2017

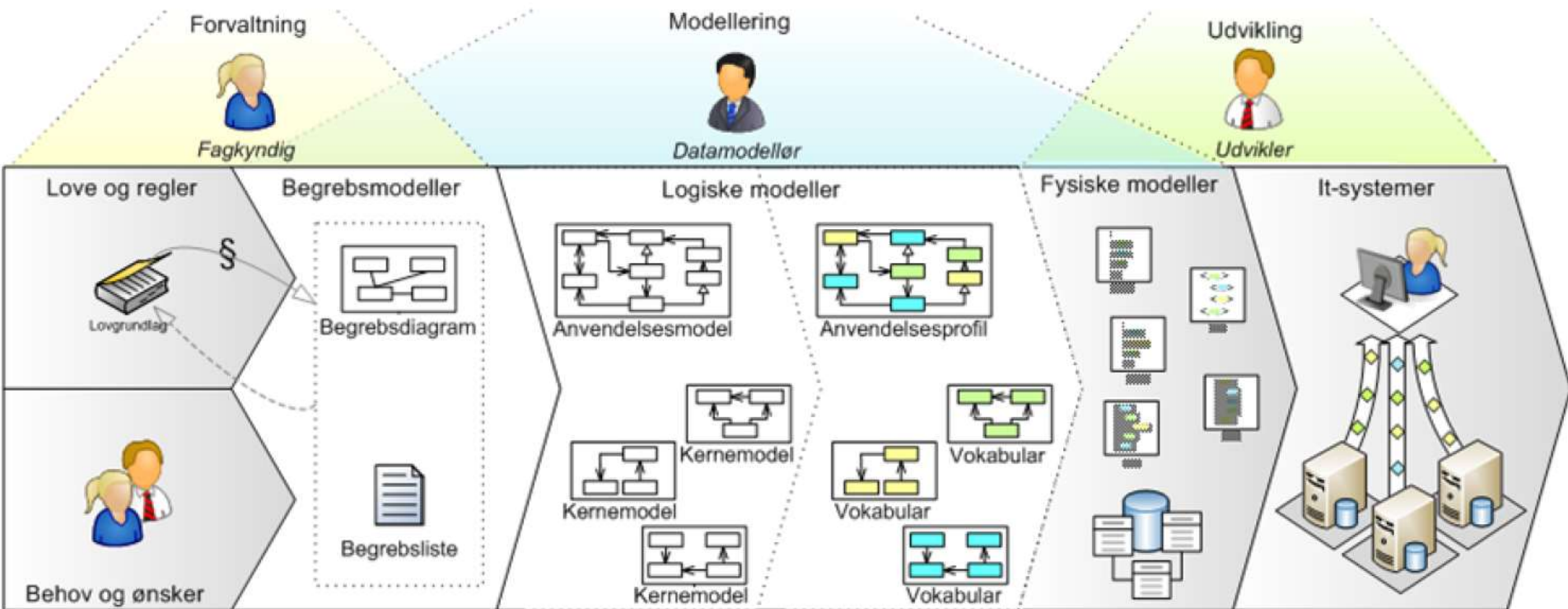
Formidling

brug

OCC



Concept models & legislation



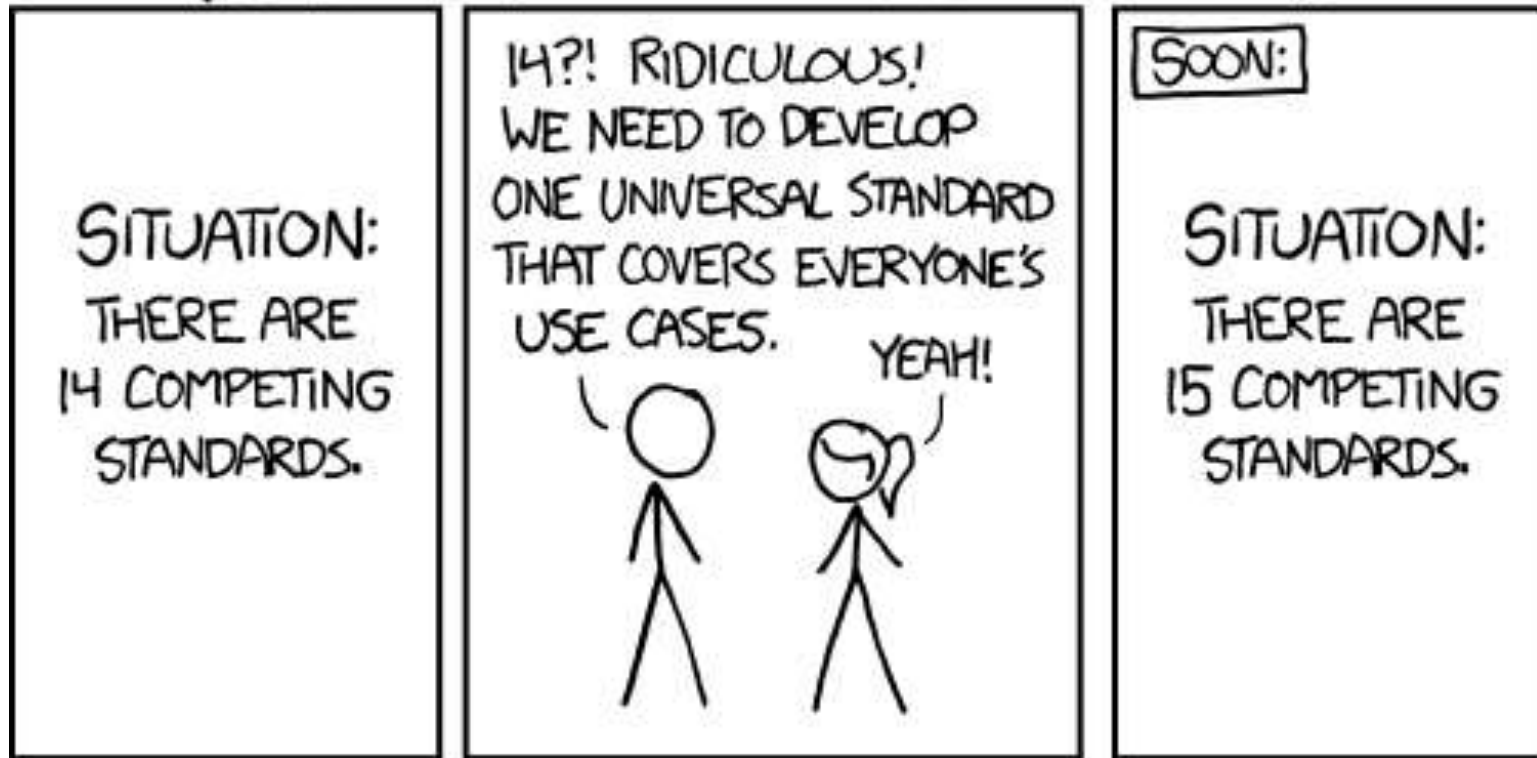
... GML application schemas

Flexibility in producing GML application schemas.

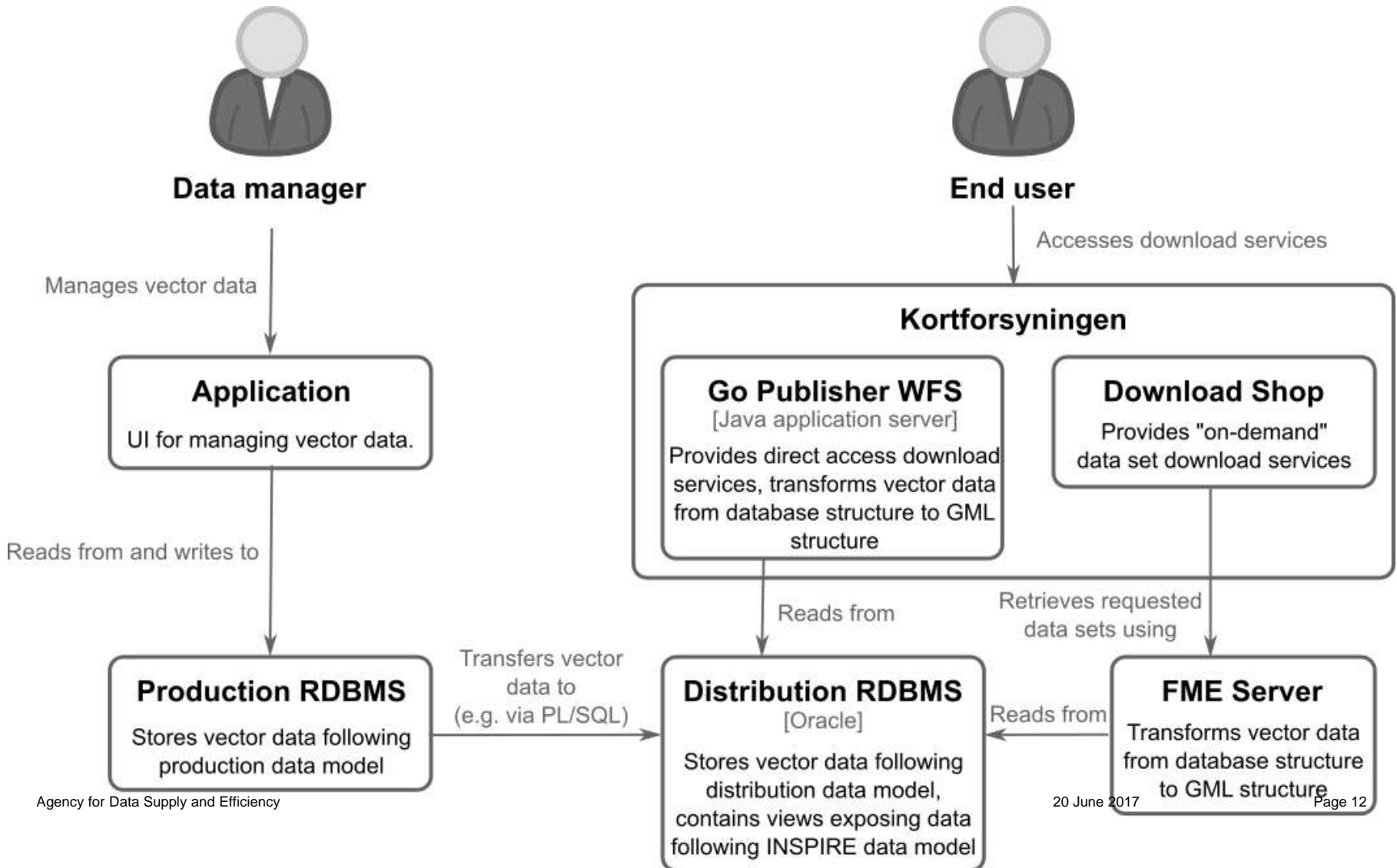
Managed independently from INSPIRE GML application schemas.

... new standard comes along

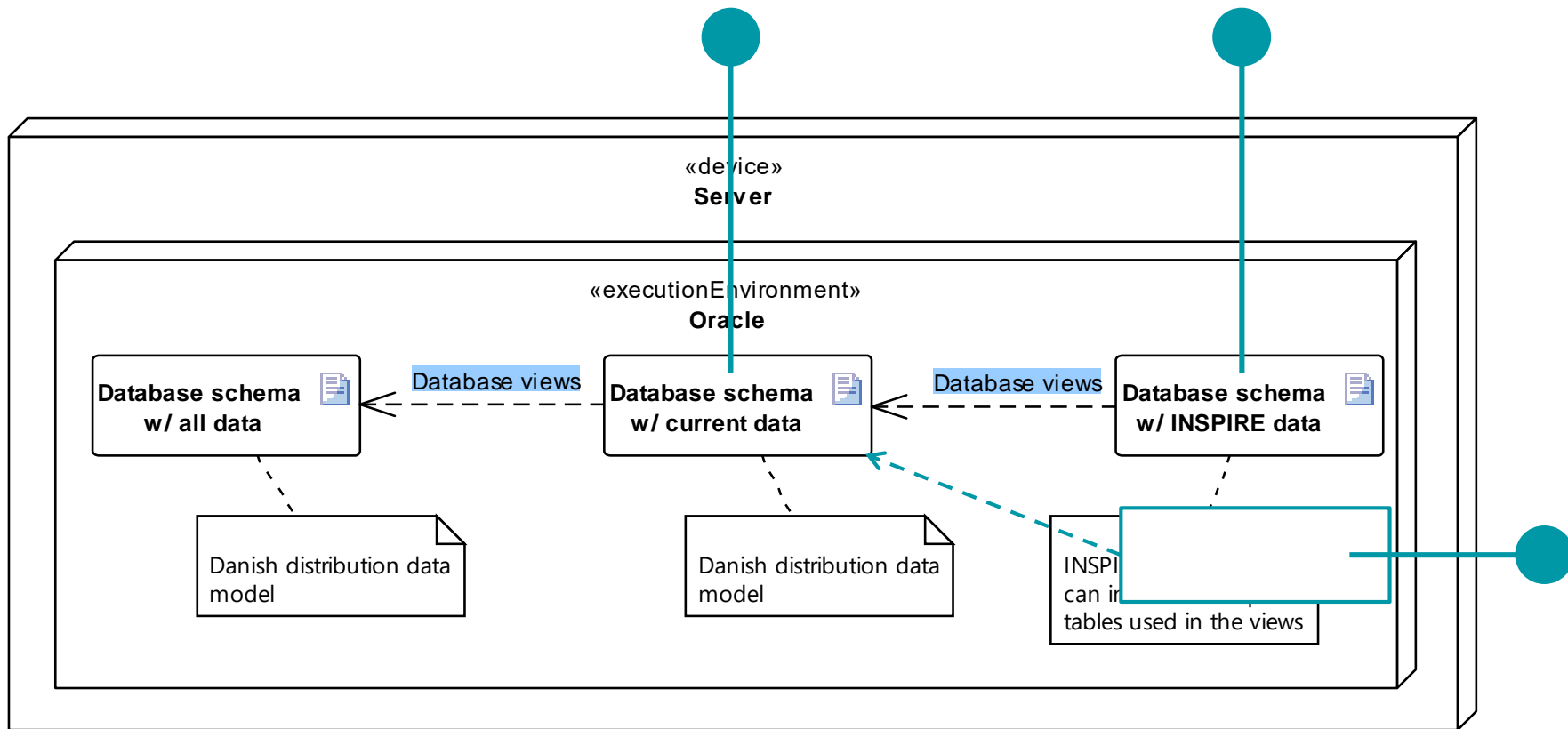
HOW STANDARDS PROLIFERATE:
(SEE: A/C CHARGERS, CHARACTER ENCODINGS, INSTANT MESSAGING, ETC.)



Architecture: overview



Distribution RDBMS



Danish Road Directorate

	INSPIRE extension	Danish model
Pros	<ul style="list-style-type: none"> • European standard • Based on pan-European needs • Well-described methodology • Possibility of reuse • Possibility of exchanging nationally defined data via a European format 	<ul style="list-style-type: none"> • National standard • Based on national needs • Terms that have meaning for the users in the domain are used • Model can immediately be part of the Basic Data Model • Possibility to refer to classes from other models in the Basic Data Model
Cons	<ul style="list-style-type: none"> • High level of complexity • INSPIRE skills are needed • Certain values in code lists are not clear defined semantically • Dependency on any future changes in INSPIRE data specs • INSPIREs code lists must be used 	<ul style="list-style-type: none"> • Not as specific as and less mature than INSPIRE rules • Exchange via INSPIRE format limited to what is defined in the INSPIRE data models.