

EuroGeographics

76, Rue du Nord
76, Noordstraat
1000 Brussels
BELGIUM
T: +32 2 888 71 93
F: +32 2 888 71 94
E: contact@eurogeographics.org

In this edition ...• **News**

Bringing information about the European Location Framework

Geospatial Excellence Award for the ESDIN project

Presenting our achievements in the EuroGeographics Annual Report

Read about Spatially Enabled Society

Introducing the Quality Knowledge Exchange Network

• **Members**

A Year of the geodetic profession in Serbia

Centenary of cadastral surveying in Switzerland

New Reference Network in Georgia

Awards from our members: National Land Survey Finland, National Land Service of Iceland, State Land Service of Latvia, National Agency for Cadastre and Land Registration in Romania

• **Products and Services**

Spotlight on EuroRegionalMap, our biggest pan-European multi-functional 1: 250 000 scale topographic dataset covering 35 countries.

EuroGeographics

*messenger***Celebrating success across Europe**

As I write, celebrations are taking place across Europe, and no, I'm not talking about the football! Colleagues in the Republic of Serbia are commemorating the year of the geodetic profession; members in Finland, Romania, Latvia and Iceland have won prestigious national awards; and in Switzerland the focus is on 100 years of cadastral surveying.

We too are celebrating after collecting a Geospatial Excellence Award on behalf of the European Spatial Data Infrastructure Network ([ESDIN](#)) project partners at the [Geospatial World Forum](#). ESDIN, which won a Geospatial Excellence award for Policy Implementation – SDI, provides the first steps towards the European Location Framework or E.L.F., a new approach to pan-European geospatial reference data with information from national mapping, cadastral and land registry authorities at its heart.

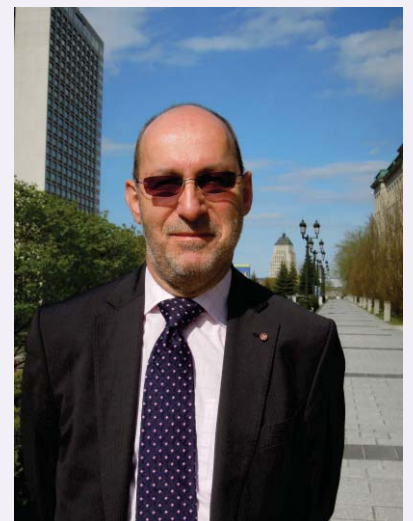
In its report – Spatially Enabled Society – the International Federation of Surveyors ([FIG](#)) identifies a spatial data infrastructure as one of the key elements to realise this vision. The E.L.F is the means by which data complying with the INSPIRE Directive will be delivered to the European Spatial Data Infrastructure and you can find out more about this exciting new initiative in an article written by EuroGeographics' Programme Manager, Antti Jakobsson. Some parts of the E.L.F. are already in place: we have introduced an automated generalization process to generate a global level of information, EuroGlobalMap from regional level data, EuroRegionalMap which is featured in this edition.

Providing quality geo-information that continues to meet the needs of users is a key issue for our members who can share experiences to identify best practice through our Quality Knowledge Exchange Network ([KEN](#)) as described by its Chair, Carol Agius from the Malta Environment and Planning Authority. This spirit of exchanging information was seen in our recent joint seminar with the Permanent Committee on the Cadastre in the EU which saw a number of brainstorming sessions and role plays covering effective representation and policy engagement. We're also highlighting the National Electronic Register of Streets Nomenclature in Romania; news of a major new project to update the Ny-Ålesund Spitsbergen observatory; and the development of a tool for efficient and accurate cadastral surveying in Georgia.

As always we welcome your feedback on any of the articles here or indeed on any other aspect of our activities, so do please feel free to contact me directly via dave.lovell@eurogeographics.org. I look forward to hearing from you.

PS: We've just published our Annual Report for 2011 which showcases the contributions our members are making to European society and celebrates their successes. It's available at www.eurogeographics.org/annualreport.

Best wishes
Dave Lovell OBE FRGS CGeog
Secretary General and Executive Director



Bringing national reference geo-information to European and cross-border use – The European Location Framework (E.L.F.)

Putting INSPIRE obligations into practice at cross-border and European level is the key driver for the European Location Framework or E.L.F. Here EuroGeographics' Programme Manager, Antti Jakobsson explains the on-going development of this important initiative and how it will increase the availability of geo-information.

What is the E.L.F.?

The E.L.F. is a technical infrastructure which delivers authoritative, interoperable, cross-border reference geo-information for analysing and understanding information connected to places and features. It is the means by which data complying with the INSPIRE Directive will be delivered to the European Spatial Data Infrastructure (ESDI) being created using EuroGeographics' members' national reference information. This uses location as the basis for searching, cross-referencing, analysing and understanding Europe-wide social, economic and environmental issues.

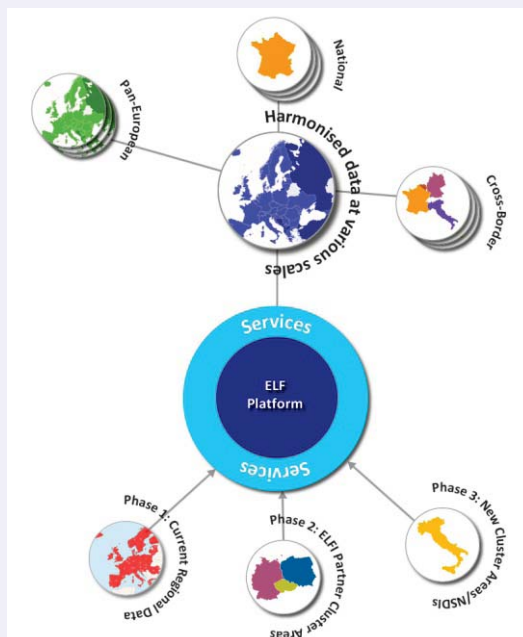
By helping to prepare data and delivering the prototype services essential to meet the requirements of the INSPIRE Directive, the ESDIN project – a collaboration between mapping and cadastral agencies, academic institutions and technology providers coordinated by EuroGeographics – laid the foundations for the E.L.F and showed the need for further work in technical, semantic and organisational interoperability levels.

Why location?

With GPS included in most cameras and phones, and growing numbers of people using this information with maps, it's never been easier to find out where we are at any given time. It is crucial, therefore that this location information, including geographical names and address, is correct and maps are accurate and up-to-date.

By using location as a fundamental building block, the E.L.F. will make definitive national geo-information datasets available and enable authoritative multilingual geographical names and addresses to be used in locating places (geocoding).

Although users may need different levels of geo-information, it is not always practical to use the most detailed, for example for analysis at global or European level, and so data must be generalised. Generalised information has traditionally been produced separately, causing problems in consistency and in how up to date it is. EuroGeographics is therefore using its experience of producing global and regional datasets from national data sources to generalise geo-information in the E.L.F. Consistent information based on national master level of details will be generalised using automatic methods bringing benefits to users by providing change-only updates, increased quality and consistency.



Meeting the E.L.F. specifications

The national datasets will be transformed to the E.L.F. specifications using automated geo-tools and defined rules. National geo-information needs to be edge-matched at national borders using agreed, quality validated national boundary data and a change detection tool for managing unique identifiers at European level is also required.

Events:

INSPIRE Conference 201
23rd to 27th June
Istanbul, Turkey

Geographical Linked Data: Lift your Data
24th June
Istanbul, Turkey

International scientific Symposium, Ukraine
10th to 15th September
Alushta, Crimea, Ukraine

SDI Days 2012
25th to 29th September
Zagreb, Croatia

INTERGEO 2012
9th to 11th October
Hannover, Germany

41st Slovenian Geodetic Day
19th to 20th October
Dolenjske toplice, Slovenia



Data People Society
Mapping Framework Community Sustainable Accurate
Location Interoperability Reliable Place Longevity
 Transformational Government Authoritative Geographic
EuroGeographics Quality
 Information Infrastructure Durable



...continued

Increasing the availability of geo-information

The process of discovering the geo-information; its licensing; authenticating the user; and then providing access to the data needs to be managed. The E.L.F. proposes using a Geo Product Finder tool and the E.L.F. platform for accessing this information. Figure 1 shows information at different level of details may be accessed for subsequent national, cross-border and pan-European use. To accommodate the different ways data providers and users want to connect to it, the technical architecture must be flexible..

What next?

Some parts of the E.L.F. are already in place. EuroGeographics has introduced an automated generalization process to generate a global level of information (the [EuroGlobalMap](#)) from regional level data ([EuroRegionalMap](#)). We have also introduced a geographical names service ([EuroGeoNames](#)) and are working on a European national boundary dataset ([State Boundaries of Europe](#)).

ESDIN delivered specifications for the E.L.F. at global and regional level, some of the geo-tools and tested the technical architecture. We propose that further development of the E.L.F. is co-funded in the ICT Policy Support Programme as part of the Competitiveness and Innovation framework Programme (CIP ICT PSP) project through European Location Framework (ELFI). This would enable the creation of a working infrastructure and services to expand the E.L.F. to national level of details. Together with the Commission, EuroGeographics is also expecting to work on legal interoperability in the Interoperability Solutions for European Public Administrations programme ([ISA](#)) for EU Location Framework Initiative of the European Commission..

The challenge now is to get a funding mechanism agreed to guarantee availability of the E.L.F.

To find out more why not read the E.L.F White Paper available [here](#).

New FIG publication identifies six basic elements for a spatially-enabled society



Six basic elements are required to realise the vision of a spatially-enabled society says a new publication launched during the International Federation of Surveyors (FIG) Working Week 2012. The result of three years' intensive work by the FIG Task Force chaired by Dr. Daniel Steudler, a well recognized expert from [Swisstopo](#) and member of EuroGeographics [Cadastre&Land Registry KEN](#), the [report](#) examines the role of land administration, land management and land governance in spatially enabled societies. It was compiled and edited in close cooperation with [Prof. Abbas Rajabifard](#) from the University of Melbourne, past President of [GSDI Association](#).

The six basic elements identified in the report are:

- A legal framework to provide the institutional structure for data sharing, discovery, and access
- A sound data integration concept to ensure multi-sourced data integration and interoperability
- A positioning infrastructure to enable and benefit from precise positioning possibilities
- A spatial data infrastructure to facilitate data sharing, to reduce duplication and to link data producers, providers and value adders to data users based on a common goal of data sharing
- Land ownership information, as the dominant issue in the interactions between government, businesses and citizens relating to land and water resources
- Data and information to respect certain basic principles and to increase the availability and interoperability of free to re-use spatial data from different actors and sectors.



Find the full report [here](#).

Centenary celebrations for cadastral surveying in Switzerland

People visiting Federation Square in Bern were invited to step into a giant puzzle of Switzerland at the start of national celebrations to mark 100 years of cadastral surveying.



At 350 m², the puzzle which was assembled by geomatics apprentices, is the biggest ever produced of the country and enabled passers-by to discover the many activities related to cadastral surveying. It was unveiled at a public event on 9 May under the patronage of a former Member of Government and attended by professionals from all cantons. During the day, three products of Cadastral Surveying were launched:

- a special stamp on cadastral surveying
- the website www.placehandicape.ch / www.rollstuhlparkplatz.ch, an Internet platform for parking spaces for the disabled in urban areas which uses information managed by private cadastral surveyors
- the new [CadastralWebMap](#) viewing service for citizens which makes use of WebMapService (WMS) technology.

A variety of events related to cadastral surveying were also organised to mark the Day of Swiss Cadastral Surveying on 12 May. These included office open days and celebrations to mark the centre of gravity of the cantons.

The centenary is a great opportunity to raise awareness of cadastral surveying and demonstrate its many services. Activities are ongoing throughout the year.

For more information, see www.cadastre.ch/2012



Data People Society
Mapping Community
Framework Interoperability
Location Interoperability
Transformational Government
EuroGeographics Reliable
Information Infrastructure Quality
Durable Sustainable
Accurate Place Longevity
Geographic

EuroGeographics 2011 Annual Report

the last one of the Association under the French Law has been completed.

Besides the EuroGeographics President's report you can find a lot of information about our common work, so as amazing achievements of our members, national mapping, cadastre & land registry authorities in their responsible work in a big number of use cases.yes

Don't hesitate and learn more about our EuroGeographics community!

Enjoy the interesting reading and valuable source of information, available on our [website](#), in both full and lower resolution version.



Developing a tool for efficient and accurate cadastral surveying

Together with the Swedish International Development Cooperation Agency (SIDA) and the World Bank, the National Agency of Public Registry, Georgia is establishing a Continuously Operating Reference Network (CORS). To provide a tool for efficient, accurate cadastral surveying, it is also installing 12 GPS Stations across the country: (6 A classes throughout Georgia and 6 B classes around Tbilisi).

The project aims to enable access to high quality coordinates by GNSS measurements and establish a national reference system connected to the European ETRS 89. It is planned to densify the network and add 5 more stations during the year. Georgia became a member of EUPOS in 2011 and continuous work to connect to the EUREF Permanent Tracking Network.



<http://geocors.napr.gov.ge/spiderweb/frmlIndex.aspx>

Serbia declares 2012 year of geodetic profession to mark 175 anniversary

Events to mark 175 years of the geodetic profession and its important contribution to the state's development are taking place across the Republic of Serbia. Activities include an exhibit dedicated to the scientific and professional development of geodesy in the Gallery of the Serbian Academy of Sciences and Arts and a wide range of workshops attracting people from education, state institutions, geodetic companies and unions.



Geodetic professionals can trace their history back to 1837 when Prince Milos initiated the issue of organized work on land survey and classification in Principedom of Serbia on the assembly on Spasovdan in Kragujevac. Since then geodetic professionals have had a huge impact on the state's development, particularly in establishing and maintaining both the utilities and real estate cadastre, which provides a basic and unique register of real estate and property rights. They will continue to play an important part in Serbia's future development as it works towards its accession to the European Union.

In recognition of this role and the high esteem in which professionals are held, the Government pronounced 2012 the year of the geodetic profession.

Completion of the Real Estate Cadastre and Registration Project

Serbia is also celebrating the completion of the Real Estate Cadastre and Registration Project financed by the World Bank and the Republic of Serbia.

Speaking at a ceremony to mark the occasion, Director of the World Bank office in Serbia, Loup Brefort said that the Republic Geodetic Authority (RGA) had achieved impressive results, adding that Serbia was now ranked 39th in this year's World Bank Doing Business report. Director of the Republic Geodetic Authority, Nenad Tesla, noted the significance the project and thanked RGA employees for their contribution. At the end of the ceremony, twenty plaques were awarded to prominent institutions and individuals to mark the 175 anniversary.

Building on a well-established tradition of providing quality geo-information: Spotlight on the Quality Knowledge Exchange Network (KEN)

The Quality KEN is one of five Knowledge Exchange Networks within EuroGeographics which bring together experts from member organisations to share best practice and experiences and discuss the day-to-day issues. It has more than 36 active participants from 26 countries.

Its Chair, Carol Agius from the Malta Environment and Planning Authority explains more about the network's activities.



European National Mapping, Cadastral and Land Registry Authorities have always taken pride in their ability to provide quality geo-information; it's a role many EuroGeographics' members have fulfilled for decades and, in some cases, centuries!

Technological changes have thrust location and geography into the mainstream with customers suddenly requiring data for a whole host of previously unimagined uses. The challenge for national mapping, cadastral and land registry authorities is to continue to provide quality information that meets these new demands.

By sharing their experiences producing and providing data and services, the quality practitioners making up the Quality KEN aim to identify best practice. This helps members to implement quality management and practice efficiently and effectively within their organisations.

The group identifies and follows trends in quality management implementation and methods by carrying out periodic questionnaires and benchmarking specific good practice. Members also take an active role with the wider geo-spatial community, following the work and research in quality related issues by other groups and projects, and are proactive in commenting on ISO standards and INSPIRE specifications.

Each year, the Quality KEN holds two plenary meetings and hosts a number of technical webinars sharing best practice case studies from different members. Recent topics discussed within the group included: quality within INSPIRE, Six Sigma, ISO standards and their use within NMCAs, E.L.F., quality models and producer/product accreditation.

To find out more please visit <http://www.eurogeographics.org/content/qken-quality>.

GI professionals can also contribute to these debates by registering at www.eurogeoforum.eu, an online resource for facilitating the exchange of views and information.

Quality KEN

The purpose of QKEN is to discuss data quality and quality management issues. We have over 36 active participants from 26 countries.

Our mission and objectives:

- establish a network of data quality experts
- support EuroGeographics policy towards European data interoperability
- share knowledge amongst members
- and promote experiences on quality.

Quality KEN in Riga, Latvia October 2011

Our 2011–12 work plan:

- Update long-term plan
- Organise two plenary and two coordinating committee per year
- Organise at least two webinar meetings per year
- Publish benchmarking report
- Work on quality requirements for EuroGeographics products
- Publish relevant news and maintain webpages
- Promote web-based tools for knowledge exchange

QKEN is chaired by [Carol Agius](#), Malta Environment and Planning Authority.

Get involved

Please contact Carol if you would like more information or would like to contribute to Quality KEN.



Data
Mapping
Framework
Location
Transformation
Information

People
Community
Interoperability
Government
EuroGeographics
Quality

Society
Sustainable
Reliable
Place
Longevity
Authoritative
Geographic

Accurate
Infrastructure
Durable

Awards for EuroGeographics' members

National Land Survey is the best central government place to work in Finland

The National Land Survey (NLS) of Finland is the best central government workplace says the State Treasury.

The award recognises NLS's long-standing work to successfully integrate well-being at work activities and occupational safety and health into all operations. Job satisfaction at the NLS is good and better than average in central government, which is exceptional for such a large organisation of 1,850 employees.

"I believe that our good results are the consequence of work in the long term", says NLS HR Director, Maritta Yläraanta. "We aim to evaluate and improve ourselves all the time. Investments in wellbeing at work are a part of the high-quality work at the NLS."

The NLS has built caring for the wellbeing of employees into the annual performance guidance process through annual planning, a performance matrix and reporting. It has also invested more than the minimum requirement in the content and quality of occupational healthcare services, and taken the initiative in developing matters that usually require external consultants prompting the award jury to comment that 'The National Land Survey of Finland has on many occasions set an example for other central government workplaces to follow'.



Best public authority award for National Land Survey of Iceland

The National Land Survey of Iceland has become the country's Institute of 2012 after it was named best public authority at a ceremony in Reykjavik. In the same week, its Director General, Magnus Gudmundsson was again elected Chair of Association of Directors of Government Institutions in Iceland.



The State Land Service of Latvia is most public-friendly state institution

The State Land Service of Latvia has been named the most public-friendly state and local authority institution and the most public-friendly state institution in e-services as part of a national campaign to improve customer service.

It was the first time the Service has taken part in the Praise Good Service awards which were judged by experts from Labsserviss.lv, the Latvian Chamber of Commerce and Industry and the Latvian Information and Communications Technology Association. Judges also took into account the opinions of 500 customers.

A total of 177 organisations, including companies and NGOs, took part in the event with 19 entering the state and local authority institutions categories.



ESDIN wins Geospatial Excellence Award at Geospatial World Forum

The European Spatial Data Infrastructure Network (ESDIN) project, co-funded by the European Commission's eContentplus programme and co-ordinated by EuroGeographics, won a Geospatial Excellence award for Policy Implementation – SDI at the Geospatial World Forum in Amsterdam.



“ESDIN's findings extend beyond simply assisting the European Union (EU) member states to meet INSPIRE obligations, they also provide the first steps towards the E.L.F, a new approach to pan-European geospatial reference data with information from national mapping, cadastral and land registry authorities at its heart,” says EuroGeographics' Programme Manager, Antti Jakobsson, who collected the award on behalf of the ESDIN project partners at the event, which was attended by around 1,000 participants from 79 countries. EuroGeographics' President, Ingrid Vanden Berghe and David Overton, ESDIN Project coordinator, joined Mr Jakobsson to accept the accolade.



“The European Location Framework will deliver a host of benefits and support a wide range of policy initiatives including the European Digital Agenda; the Europe 2020 strategy for smart, sustainable growth; and the Directive on the reuse of Public Sector Information. The E.L.F's reach will also extend far beyond the borders of the 27 Member States with many EuroGeographics' members outside the EU connecting their national geospatial reference data services to deliver harmonised pan-European 'data as a service location information,” added EuroGeographics' Secretary General and Executive Director, Dave Lovell.

Data People Society
Mapping Community
Framework Interoperability
Transformational Government
EuroGeographics Quality
Information Infrastructure
Durable Reliable Sustainable Accurate
Place Longevity
Authoritative Geographic



Data People Society
Mapping Community Sustainable Accurate
 Framework Interoperability Place Longevity
 Location Interoperability Place Longevity
 Transformational Government Authoritative Geographic
EuroGeographics Quality
 Information Infrastructure Durable

Follow us on Facebook!

[EuroGeographics](#) is coming closer to you, please find more information and learn about our activities, achievements, events, we are looking forward to be friend with you!

www.facebook.com/EuroGeographics

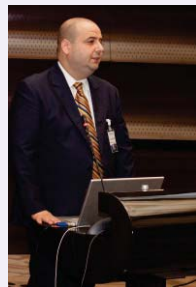


Green light for National Electronic Register of Streets Nomenclature in Romania (RENNS)

A partnership between the National Agency for Cadastre and Land Registration (ANCP), the Association of Communas of Romania (ACoR) and National Association of Public Administration Information Systems (ANIAP) is delivering an important project to create a unique national register of streets nomenclature. This will standardise and make available the allocation of street names and administrative numbers to simplify administration activities and reduce costs whilst also increasing service quality and streamlining the collaboration between central and local government, and citizens.



Currently there are situations where two streets in the same city may have the same name; when not all the immovable real estates have an administrative number; or the same administrative number is repeated on the same street. The National Electronic Register of Streets Nomenclature (RENNS) project will correct the errors existing in the address system in Romania while achieving one of the most modern and necessary national registers.



President Director General of ANCP, Mihai BUSUIOC says: “RENNS will decrease the reaction times of competent authorities, such as ambulances, rescue, fireman and police, which are dealing with emergency situations; facilitate interoperability and data sharing at a national and European level; and give access to the streets nomenclature”.

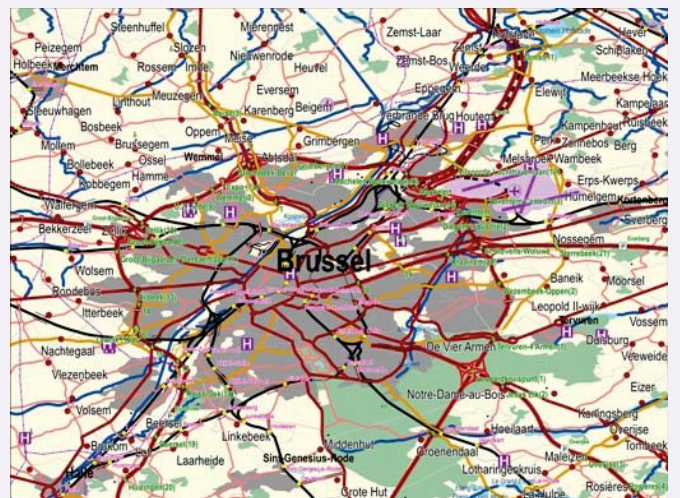
The project’s total value is 8 721 000 RON (approximately €2.2 million) and it is co-financed with approx. €1.7 million by the European Social Fund, the rest being provided by ANCP.

Spotlight on EuroRegionalMap

EuroRegionalMap is a multi-functional 1: 250 000 scale topographic dataset covering 35 countries. Designed for business use, it enables you to process comprehensive spatial analysis using seven themes including transport and water networks, which have full connectivity, and topologically consistent administrative boundaries.

EuroRegionalMap is ideal for planning marketing projects, service provision and retail site location; environmental analysis; vehicle routing; and for use as a detailed background on which to overlay specific information.

In The Netherlands, the Environment and Nature Planning Bureau is using the dataset as part of its EUrbanis project for assessing the quality of life given current and future urbanisation patterns.



EuroGeographics produces a range of pan-European datasets and services created through the active contribution of members.

To find out how our datasets, including EuroRegionalMap could benefit you, visit: www.eurogeographics.org/productsandservices/usecases